



Safety Vents - Safety Valves for Steam

- Safety Valve is an equipment which guards against excess pressure. This design is suitable for use under steam.
- Safety valves can be set to a pressure between 2 to 12 bars by the end user.

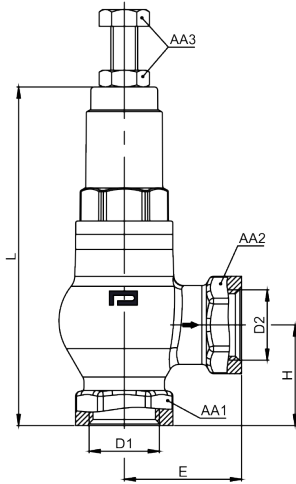
Usage Properties

Conformity	· CE 0036
Fluid Temperature	· Maximum + 200 °C
Storage Temperature	· -20 ... +60 °C
Pressure Range	· 2 - 12 bar
Max.Pressure	· PN 25

Constructive Properties

Connection	· G 1/2" B · G 3/4" · G 1" · G 1 1/4" · G 1 1/2" · G 2"
Discharge Connection	· G 1/2" B
Adjusting Bolt	· Steel Plated
Tension Spring	· Stainless Steel

Technical Drawings - Safety Valves for Steam



KOD	D1	D2	L	H	E	AA1	AA2	AA3
097401	G 1/2"	G 1/2"	110	30	35	26	26	13
097501	G 3/4"	G 3/4"	112	32	40	32	31	13
097601	G 1"	G 1"	131	40	47	40	39	13
097491	G 1 1/4"	G 1 1/4"	154	44	56	49	49	17
097591	G 1 1/2"	G 1 1/2"	177	47	62	56	56	19
097691	G 2"	G 2"	200	75	75	72	72	19

/